



## Traba Trades Portfolio



# About Us

**Traba Trades: Excellence in Construction and Renovation, trusted trades!**

**Traba Trades is a premium Construction Company dedicated to delivering a comprehensive range of building and renovation services. With years of experience and a team of skilled professionals, we pride ourselves on ensuring top-quality workmanship and complete customer satisfaction.**

Introducing Conrado Baumer:

Our story began with Conrado Baumer, a skilled tradesperson who started in gib fixing and quickly advanced to plastering. Within six months, Conrado became a team leader and soon received an offer to join one of New Zealand's largest interior companies as a plasterer. Less than a year later, he was promoted to Site Supervisor, successfully overseeing projects for numerous well-known companies in the residential and commercial markets, including Aspec Construction, C3 Construction, Miles Construction, Pritchard Signature, Emandee Homes, Finesse Residential, Ashton Residential, Ceta Homes, Placemakers, Linmar Developments, Build Smart Group, Olley Construction, Superior Construction, GJ Gardner, Creda Building, PF Construction, LEP Construction, Next Level Construction, Rent Zone, Kianga Ora, and Stehr Brothers and much more.

After four years as a Site Supervisor, Conrado sought new challenges and took on the role of Site Foreman at a medium-sized construction company. He managed a large-scale project named "The Workshops," consisting of 160 workshops across nine buildings, covering more than 20,000 square meters, with a budget exceeding \$30 million. His responsibilities included ensuring proper processes for subsequent trades, quality assurance checks, conducting daily pre-starts for over 70 trades, weekly meetings with on-site supervisors, and ensuring all trades adhered to health and safety procedures.

After two years as a Site Foreman, Conrado was promoted to Site Manager, where he oversaw the refurbishment of over 200 houses affected by last year's flooding. In this role, he coordinated various trades, including builders, plumbers, electricians, gib fixers, plasterers, painters, flooring specialists, tilers, kitchen installers, cabinetry experts, and Chem Dry professionals. He ensured quality workmanship, timely project delivery, and minimized reworks or returns. Additionally, he maintained health and safety compliance, organized trades, procured materials, and liaised with insurance companies.

**After years of hard work and consistently ensuring client satisfaction with top-quality and timely delivery, Conrado is now embarking on a new adventure with Traba Trades. Our company is committed to leveraging his extensive knowledge and effort to provide exceptional service, utilizing trusted trades selected over the years, and offering fair prices and high quality.**



# Why Choose Us?



- **Experienced Professionals:** Our team has extensive experience in the construction industry, ensuring high-quality results with meticulous attention to detail.
- **Comprehensive Full Package:** Traba Trades offers a complete package for our clients. Once the framing and initial services are completed, we take over all subsequent tasks, including ceiling grid installation, insulation, gib fixing, plastering, painting, and more. This approach minimizes on-site issues and reduces the number of trades you need to manage.
- **Trusted Trades:** Traba Trades only works with trusted trades who have been personally known through countless successful projects. We use the same top tier subcontractors that other large companies rely on.
- **Guaranteed Post Line Inspection:** We guarantee 100% that all post-line inspections will pass. After our gib fixing team completes their work, our Site Manager conducts a thorough inspection to ensure all brace and performance walls are done properly, following all GIB guidelines. Any mistakes are addressed before the post-line inspection.
- **Stress-Free Plastering and Painting:** We guarantee no final stress with plastering and painting during handover. We use the best teams for each project, minimizing time and touch-ups. Our system ensures that after plastering is done, the painter applies the first coat, followed by a light check by the Traba Trades Site Manager to mark any defects for next day fixing. This process ensures a high-quality finish before the final handover with the client.
- **Health and Safety Compliance:** Traba Trades adheres to all health and safety procedures, ensuring the well-being of our tradespeople. We implement daily sign-ins and sign-outs, daily pre-start and site meetings, and provide SSP and all other necessary protocols.
- **Customer Satisfaction:** We prioritize our clients' needs and strive to exceed their expectations on every project.
- **Extensive Background:** With over 10 years of experience in construction, finance and management, we have successfully overseen thousands of residential and commercial projects around Auckland.
- **Comprehensive Services:** From new projects, whether small, medium, or large, to minor repairs and major renovations, we offer a full range of services to meet all your construction needs.
- **Quality Materials:** We use only the best materials to ensure durability and longevity in all our projects



# Ceiling Grid

For Residential or Commercial we provide expert installation of ceiling grids, ensuring a perfect fit and finish for your commercial or residential spaces. For installations we always follow the GIB® Rondo® Metal Batten InStallatlon manual.

## GIB® Rondo® Metal Batten Systems

Providing a stable substrate for plasterboard ceiling linings.

A large proportion of ceiling defects such as peaking or cracked joints and popped fasteners can be attributed to movement in the substrate.

Timber ceiling substrates are significantly more prone to temperature or atmospheric induced movement and shrinkage. These issues tend to impact on the surface of the plasterboard and can result in call-backs.

Metal ceiling batten systems provide a stable substrate for plasterboard ceiling linings.

Regular users of metal batten systems consistently have fewer call-backs for movement related ceiling defects such as peaking or cracked joints and popped fasteners.

It does require a slight change in methodology as many builders struggle to make the move from timber to steel.

However, once the change is made and builders, clients and homeowners realise, firstly how simple it is to install and secondly the benefits of reduced callbacks, very few revert to using timber.





# Insulation

Our insulation services help improve energy efficiency and comfort and reduce noise in your home or office, using the best materials and techniques.



**Energy Efficiency:** Wall insulation helps to reduce the amount of heat that escapes during winter and keeps your home cooler in summer.

This means your heating and cooling systems don't have to work as hard, leading to lower energy bills.

**Comfort:** Insulation helps maintain a consistent indoor temperature, making your home more comfortable year-round.

**Noise Reduction:** Insulated walls can significantly reduce the amount of noise that enters or leaves your home, providing a quieter living environment.

**Moisture Control:** Proper insulation can help control moisture levels within your walls, reducing the risk of mold and mildew growth.

**Environmental Impact:** By reducing energy consumption, insulation helps lower your carbon footprint, contributing to a more sustainable environment.

**Fire Resistance:** Some insulation materials can add a layer of fire resistance to your home, enhancing safety.

**Increased Property Value:** Homes with good insulation are often more attractive to buyers, potentially increasing the resale value of your property.





# Intello Wrap + Batten

We offer Intello wrap installation to enhance the airtightness and moisture control of your building, contributing to a healthier indoor environment.

**Moisture Control:** Intello wrap provides excellent protection against moisture damage and mold. It is a humidity-variable membrane, meaning it adapts to changing humidity levels to prevent moisture buildup within walls.

**Air Tightness:** It helps create an airtight seal, reducing drafts and improving the overall energy efficiency of the home.

**Seasonal Adaptability:** The membrane's properties change with the seasons. In winter, it reduces moisture penetration, while in summer, it allows moisture to escape, ensuring the structure remains dry and healthy.

**Compatibility:** Intello wrap can be used with all fibrous insulation materials, making it a versatile choice for various building projects.

**Durability:** It offers long-term protection and has been tested and certified for its performance, ensuring it will last for the lifetime of the building.

**Health and Safety:** By controlling moisture and improving air tightness, Intello wrap contributes to a healthier indoor environment, reducing the risk of mold and improving air quality.

These benefits make Intello wrap a popular choice for architects, builders and homeowners looking to enhance the durability, efficiency, and comfort of their homes.





# Gib Delivery

Using GIB delivery on your projects offers several advantages. Can enhance the efficiency, quality, and convenience of your construction projects, helping you stay on schedule and within budget. No worries, we will do our best to lock in your gib in the requested date on Construction Programme and delivered in the right units, not having problem moving gibs around units after.



**Efficiency:** GIB delivery ensures that materials are brought directly to your site, saving you time and effort in sourcing and transporting them.

**Quality Assurance:** By using GIB delivery, you can be confident that the materials are handled properly and delivered in good condition, reducing the risk of damage.

**Cost-Effective:** It can be more cost-effective to have GIB delivered directly to your site, as it reduces the need for multiple trips and handling.

**Convenience:** Coordinating GIB delivery with your project schedule helps streamline the workflow, ensuring that materials are available when needed and avoiding delays.

**Professional Handling:** Delivery services often include professional handling and placement of the GIB boards, which can help prevent damage and ensure they are ready for installation.

**Reduced On-Site Issues:** Having GIB delivered directly to your site minimizes the number of trades you need to manage, reducing potential on-site issues and improving overall project coordination, splitting gib per unit as requested by Traba Trades Site Manager





# Gib Fixing

Using professional GIB fixers is crucial for several reasons. Professional GIB fixers ensures that your project is completed to the highest standards, providing a durable, aesthetically pleasing, safe result and delivery on time. No worries! Your project will be passing in all post line inspection. We guarantee 100%. Our Site Manager will make sure to check all the brace and performance walls with our Gib Fixers Team. Also, our team follow the GIB GUIDE 2024 and only uses Gib Grabber Screws and Gib Products, or as requested by the client.

## Precision and Accuracy:

Professional GIB fixers have the expertise to ensure that gypsum boards are installed with precision and accuracy. This is essential for achieving a smooth, even surface that is ready for painting or wallpapering.

## Quality Workmanship:

Experienced fixers understand the intricacies of GIB fixing, including proper alignment, secure fastening, and seamless joint finishing. This results in a high-quality finish that enhances the overall appearance and durability of your walls and ceilings.

**Time Efficiency:** Professionals can complete the job more quickly and efficiently than someone without experience. This helps keep your project on schedule and reduces downtime.





# Gib Fixing



Our GIB fixers bring over 8 years of experience to every project, whether residential or commercial. We take pride in our work, ensuring each job is completed with the highest quality and delivered on time.

For both residential and commercial projects, our GIB fixers ensure walls are lined horizontally whenever possible, following the GIB Guide to minimize joints and plastering, resulting in a high-quality finish.

For performance walls, such as Braceline, Noiseline, and Fireline, we strictly adhere to the GIB Guide, using the correct screws and applying sound and fire seals as required.

This meticulous approach helps us avoid issues during post-line inspections and guarantees superior results.





# Gib Fixing

Traba Trades guarantee 100% that all post-line inspections will pass.

After our gib fixing team completes their work, our Site Manager conducts a thorough inspection to ensure all brace and performance walls are done properly, following all GIB guidelines.

Any mistakes are addressed before the post-line inspection.





# Villaboard Fixing & Plastering



We are also specialist doing villaboard fixing and plastering following all Hardie Guide and materials for a high quality.





# Plastering Level 4



Our Plasterers team bring over 10 years of experience to every project, whether residential or commercial. We take pride in our work, ensuring each job is completed with the highest quality and delivered on time. We offer skimming level 5 when the project has critical light creating a high level of finishing. Also we do any kind of trims. slimline, arch bead, negative detail and more.

**Quality Finish:** Professional plasterers ensure a smooth, even finish that enhances the aesthetic appeal of your interiors. This high-quality finish is essential for creating a polished look that adds value to your property.

**Durability:** Expert plasterers use the right techniques and materials to ensure the plastering is durable and long-lasting. This reduces the need for frequent repairs and maintenance.

**Efficiency:** Professionals can complete the job more quickly and efficiently, minimizing disruptions to your project timeline. Their experience allows them to handle any challenges that arise during the plastering process.

**Compliance with Standards:** Professional plasterers are familiar with local building codes and standards, ensuring that your project complies with all relevant regulations. This is particularly important for commercial projects where compliance is critical.

**Problem-Solving Skills:** Experienced plasterers can identify and address potential issues before they become major problems, ensuring a smoother construction process.





# Plastering Level 4

After our Plasterer Team completes the sanding, our Painter Team will begin priming the walls and ceilings. Our Site Manager will then conduct a light check to identify any defects, marking them for immediate correction by our Plasterer Team. But we guarantee a high level of Plastering and less defects. This process ensures we save time and deliver a high-quality finish.

Stairwells often experience a lot of popping screws due to several factors and we can avoid it using:

**Negative Detail:**  
Creating a gap for negative detail can help with cracks and popping screws by allowing for some movement without affecting the drywall. This technique can absorb minor shifts and expansions, reducing the stress on the screws and preventing them from popping out.

Implementing these strategies can help maintain the integrity of your stairwell drywall and reduce the occurrence of popping screws.





# Painting

With in more than 9 years of experience, our professional Painting Team cover both interior and exterior surfaces, delivering a fresh and vibrant look to your Project. The most important, your team will not have fights between Painters x Plasterers, as mentioned before, they are the same team, and our Site Manager will make sure the plasterer were done with high quality, leaving a free run for the painters.

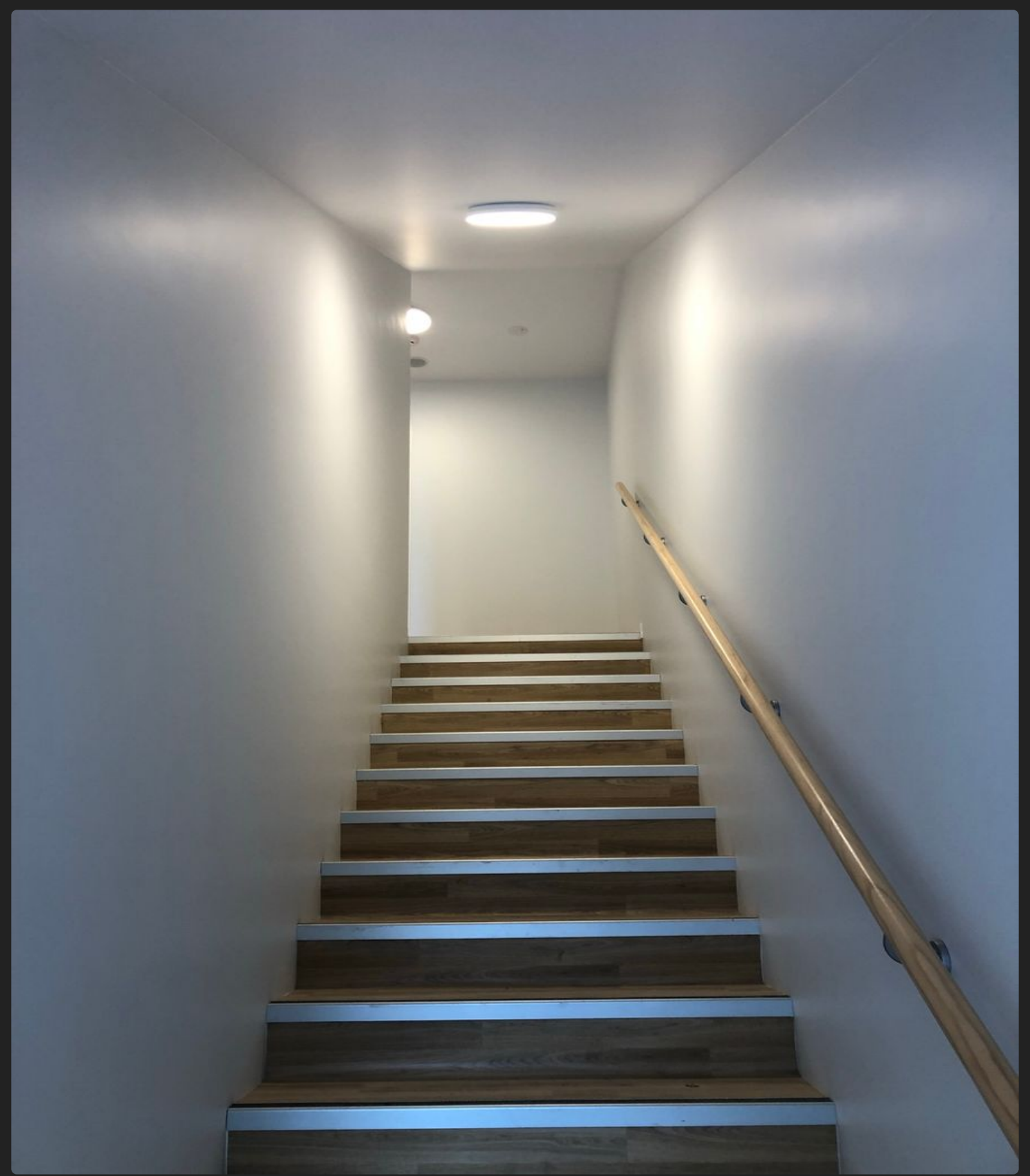


In our painting quote, we ensure that all aspects of the work are covered, including interior walls and ceilings, doors and windows, trims, and much more.

We guarantee high-quality results and timely completion.

After the work is done, we conduct a final walkthrough with the client and architects to identify any defects, which we promptly address the next day.

By following this routine, we ensure that both the client and their Site Manager are satisfied with the results, as shown in the photo on your left : )





## Skimming Level 5

Our Plasterer Team are ready for any kind of work and challenges. We can offer skimming level 5 services where required. Such as critical lights in stairwell, entry door and rooms. Also for any kind of renovation where the previous wall was with wall paper we can offer skimming level 5, removing the old wall paper and applying the skimming in the walls.

Check before and after of a client who was affected with flooding last year.

Our services included:  
Cutting gib 300mm, remove and replace gib, skirting and insulation, remove wallpaper and skimming walls.

Also, we removed and replaced old carpet, vinyl, laundry station and remove and install new laundry station, toilet seat and bathroom cabinetry.





# Skimming Level 5



“In the photos, you can see the completed skimming and painting, along with the installation of new carpet.

The client was very pleased with the results.”





# Renovation, Alteration & Maintenance

We specialize in renovation and alteration projects, transforming your space to meet your evolving needs and preferences. From demolition to completion, we handle every step of the process. Below are some photos showcasing our work over the years. Our services have been provided to individual clients, construction companies, and insurance companies.

In 2023, we completed over 200 houses affected by flooding in Auckland, handling a wide range of tasks from earthwork to project completion, and sometimes even building entirely new houses.

We managed more than 60 carpenters across multiple houses, overseeing strip-outs, coordinating laborers, and arranging for plumbers and electricians for the first service.

We also handled post-line and council inspections, GIB delivery, material orders, and supervised carpenters, GIB fixers, plasterers, painters, and flooring teams (underlay, vinyl, carpet, tiling).

Additionally, we installed new doors and frames, cabinetry, new kitchens, splashbacks, full bathrooms, and final cleaning.

With this extensive experience, we ensure that high quality is our first impression.

Whether your project is small, medium, or large, or involves alterations, don't hesitate to contact us. It will be our pleasure to help make your dream project a reality.





# Renovation, Alteration & Maintenance



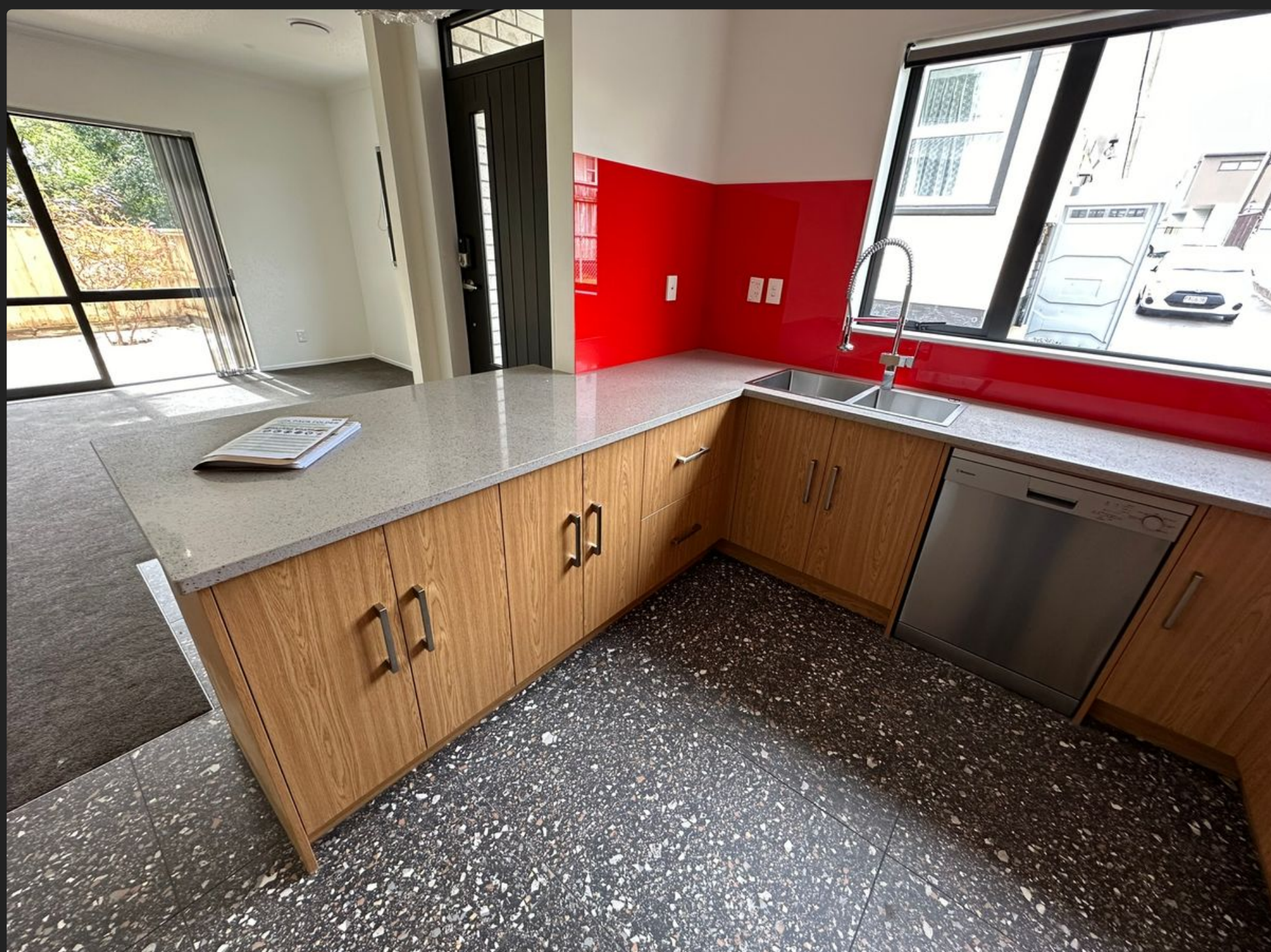
We manage every aspect, including talking with owner, client all the time, building new frames, insulation, gib fixing, plastering, painting, flooring (vinyl, carpet, tiling), electrical work, plumbing, and cleaning. You can trust us to ensure the highest quality and timely completion of all tasks. Additionally, our maintenance services keep your property in top condition, addressing any issues promptly and effectively

Here you can see some photos of the projects we have completed. The house on the right was severely affected by flooding, with water reaching 400mm from the floor to the ceiling.

Our team coordinated the setup of electricians and plumbers first, then stripped out of GIB, removed the old insulation, and installed new insulation.

We completed GIB fixing and plastering, and brought in carpenters for finishing lines, doors, and frames.

Our painters, kitchen, cabinetry, flooring team (carpet, vinyl, tiling), electricians, plumbers, and cleaners all worked together to restore the house to its former glory, as you can see in the photos.



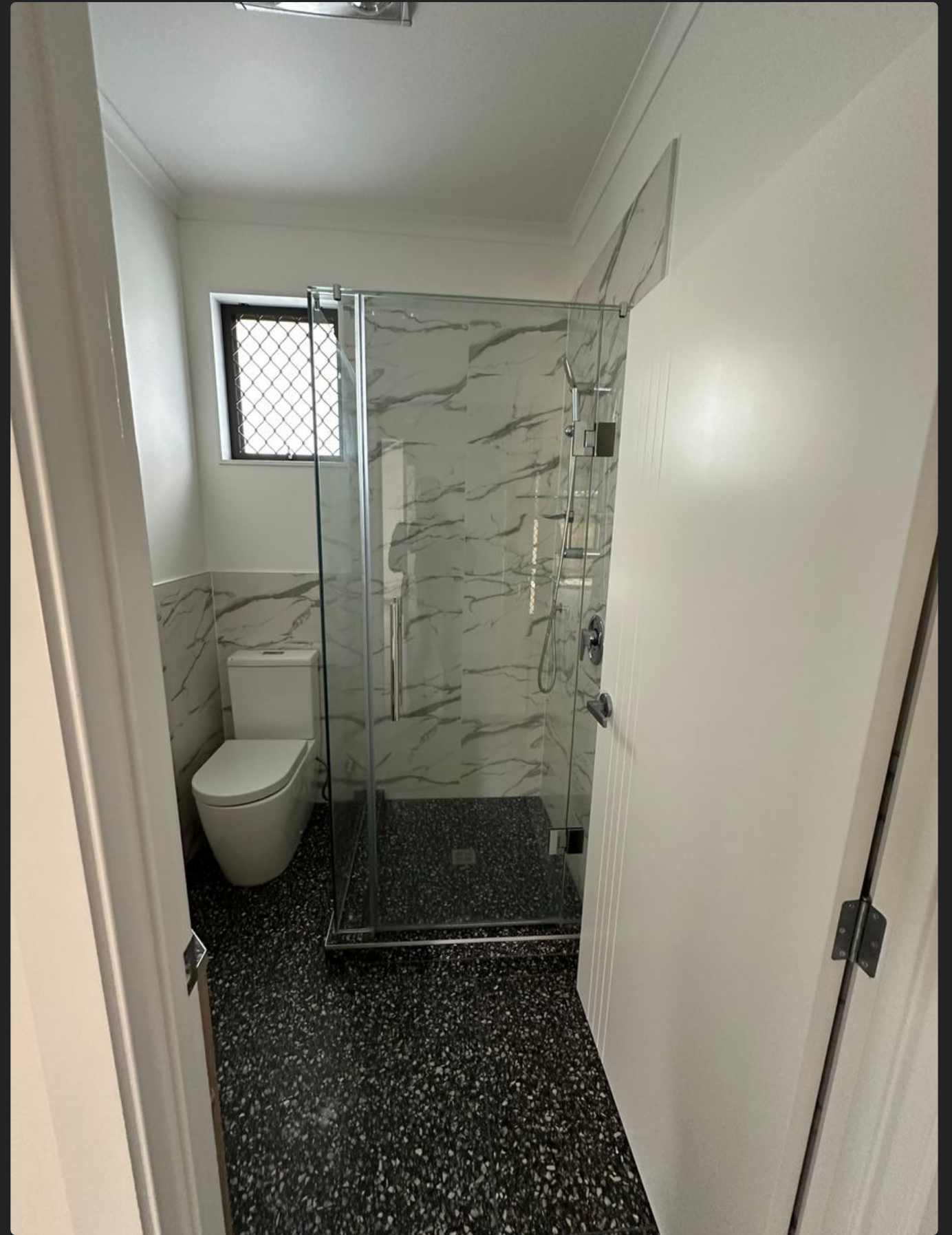


# Renovation, Alteration & Maintenance

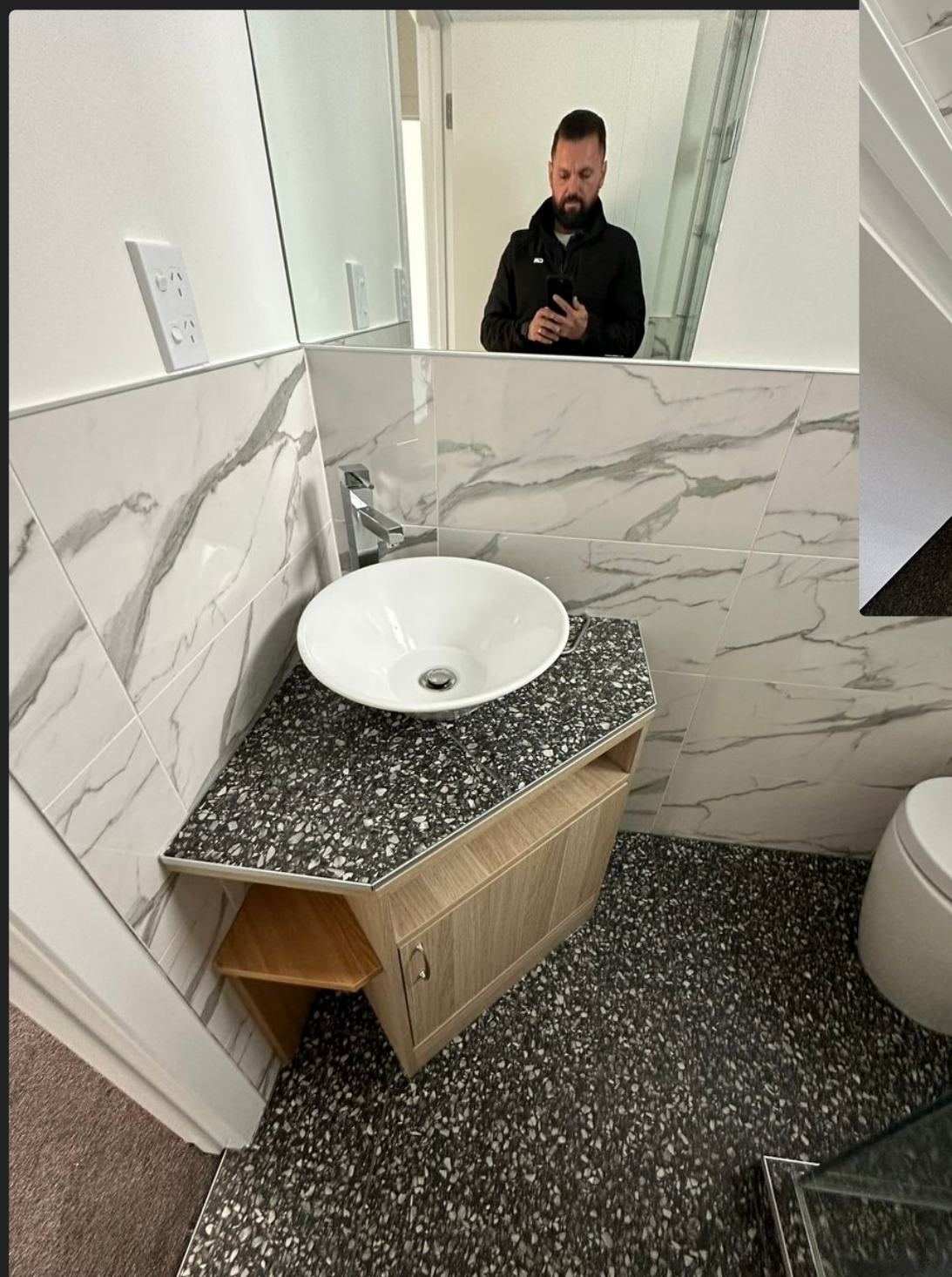
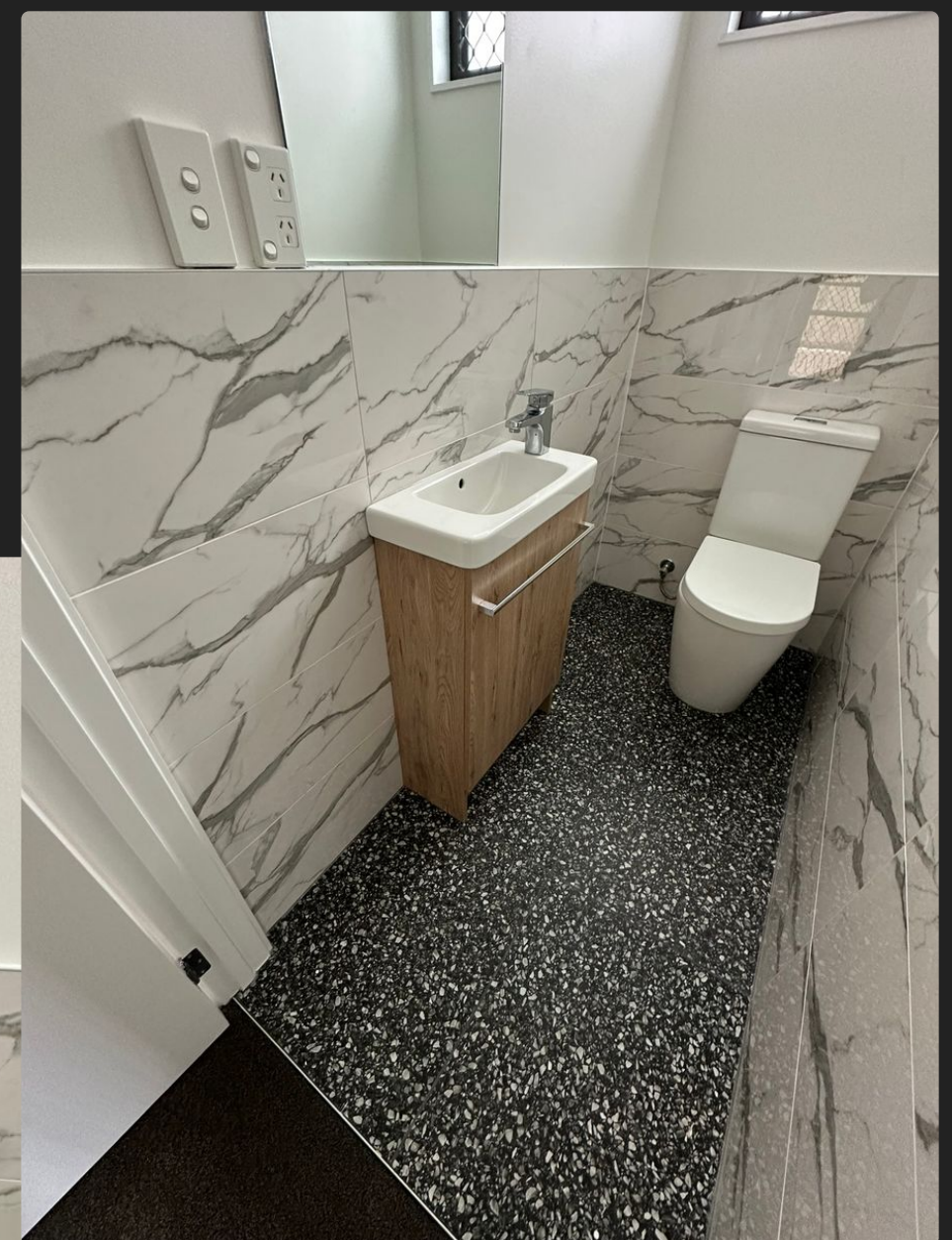




# Renovation, Alteration & Maintenance



“The bathroom and toilet have been fully renovated, including plumbing services, waterproofing, wall and floor tiling, installation of new shower glass, a new toilet seat, new cabinetry, and sink.”







“Unfortunately, Mairangi Bowling Clube was also affected by flooding. But no worries! We carried out a full renovation of the bar, kitchen, and function area including a new layout of bar, new doors, frames, and hardware, new huge sliding doors, a new kitchen, a new storage room, new flooring (vinyl, carpet, and polished floors), roofer crew, and managed the Chem Dry crew, among other tasks.”





# Renovation, Alteration & Maintenance

**TT**  
**TRABA TRADES**  
TRUSTED TRADES

“Experience the magic of construction and the beauty of a stunning renovation.

For more details, please contact the Mairangi Bowling Club board about the services provided by Conrado Baumer as Site Manager, during the post-flood renovation.”









# Renovation, Alteration & Maintenance





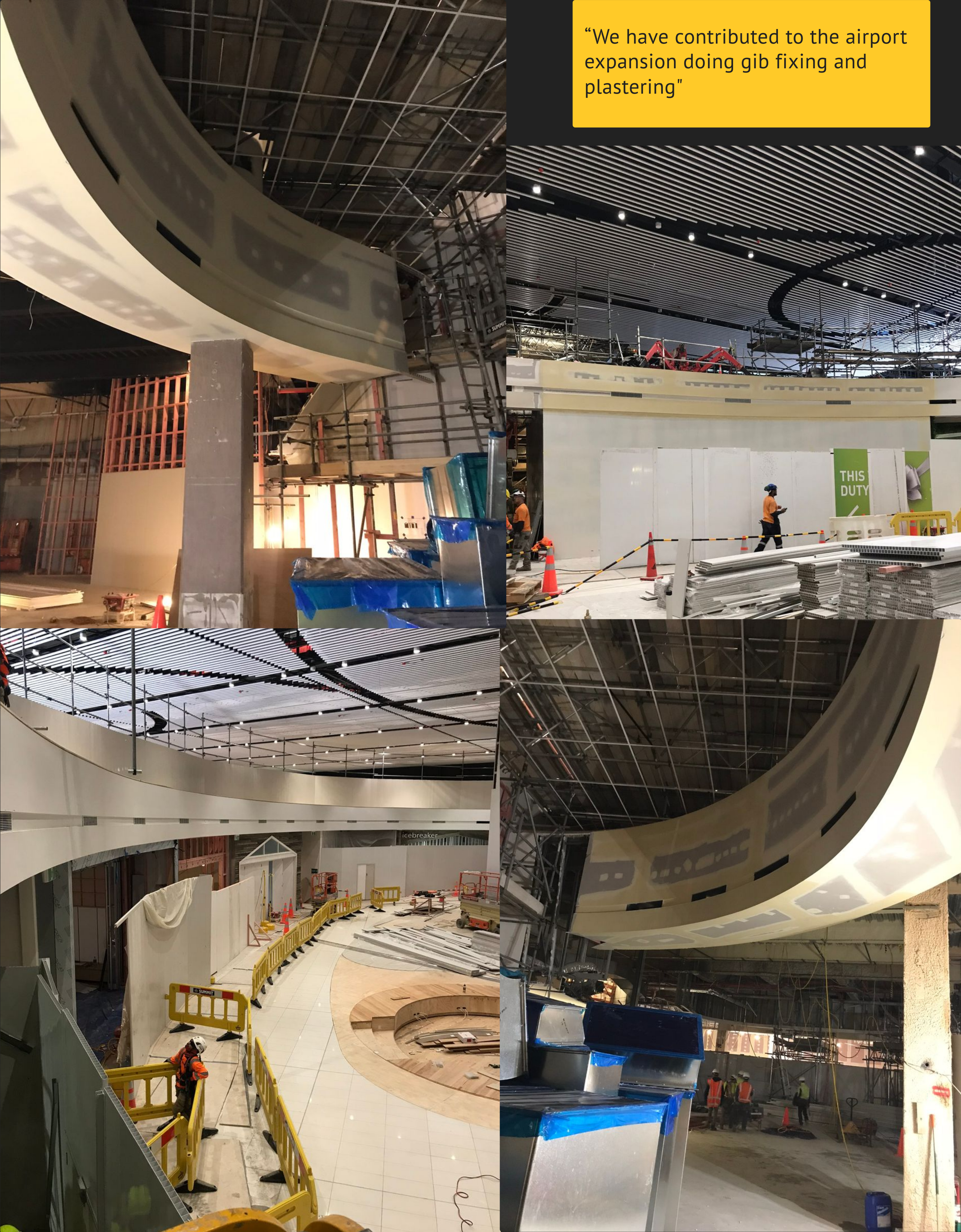




# Renovation, Alteration & Maintenance



“We have contributed to the airport expansion doing gib fixing and plastering”





# Renovation, Alteration & Maintenance

“And proudly completed numerous housing projects for Kāinga Ora - Homes and Communities in New Zealand doing full package.”





# Renovation, Alteration & Maintenance

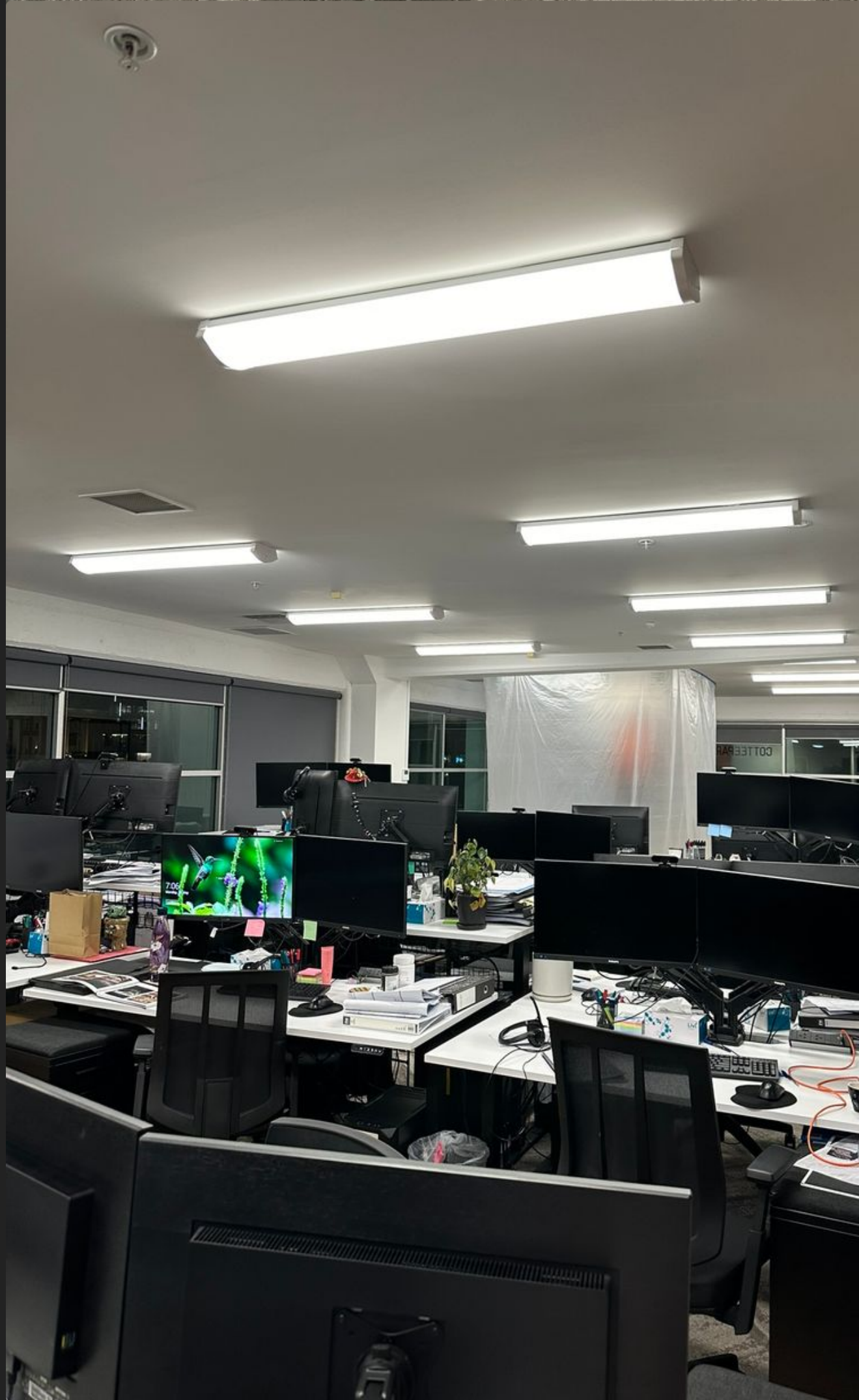
**TRABA TRADES**  
TRUSTED TRADES





# Renovation, Alteration & Maintenance

“From small to large projects, we’ve got you covered. You won’t need to worry about management, health and safety, housekeeping, or cleaning. Our team ensures all mentioned before and with minimal dust from construction by creating effective barriers.”





# Contact us



For more information, to request a quote, or even a catch up to discuss Future Projects, please contact us at:



**Conrado Baumer**  
**021 0881 9622**

**[trabatrades@gmail.com](mailto:trabatrades@gmail.com)**

Let's work together! It would be a pleasure to assist you with your Future Projects!